

D CLASS
CARRIAGE

XR3034

ULTRA HIGH
CAPACITY
ROLLER BOOM



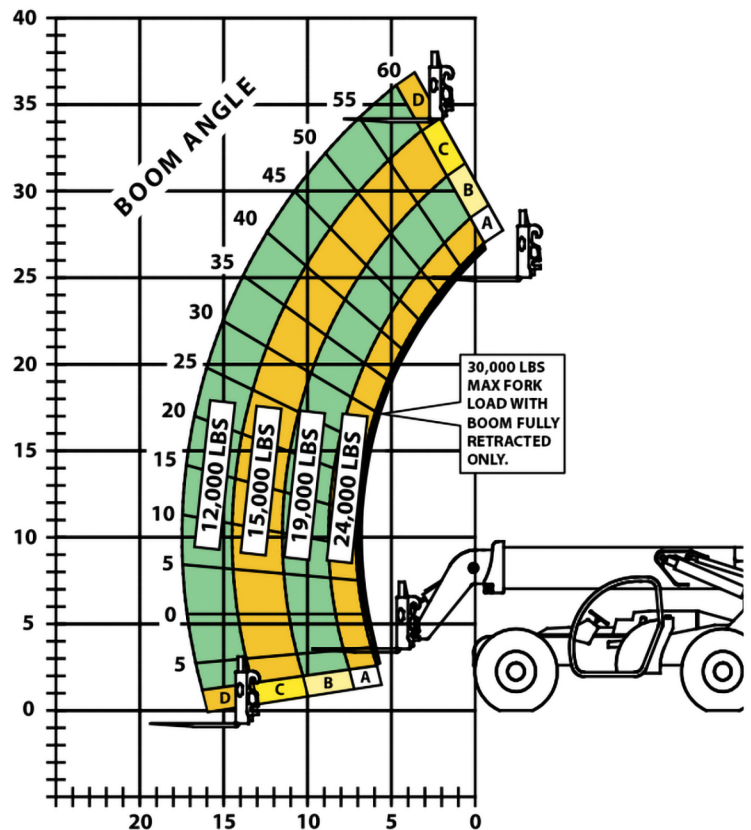
30,000 LBS
CAPACITY

34 FT
LIFT HEIGHT

173 HP

Capacity	30,000 lbs
Max. lift height	34'
Forward reach	17' 6"
Frame leveling L/R	8°
Weight	49,100 lbs
Engine (Cummins 4.5L)	173 hp (Tier 4F)
Fuel capacity72 gal
Tires	Foam Filled 16.00 x 25 - 28
GPM	49
PSI	4,500
Hydraulic oil capacity58 gal
Length to fork face	23' 11"
Width	102"
Height	9' 6"
Wheel base	148"
Ground clearance	15"
Turning radius	16' 8"
Warranty	Xtreme 10-5-2

FORK POSITIONING CARRIAGE



THE XTREME DIFFERENCE.

Long Life Boom Rollers

Rollers eliminate chatter, delivering smoother boom operation



360° Visibility

Operator can view the entire working area around the telehandler



10-5-2 WARRANTY

10 YEARS OR 10,000 HOURS
FRAME & CHASSIS WELDMENT

5 YEARS OR 5,000 HOURS
BOOM WELDMENT & ROLLERS

2 YEARS OR 2,000 HOURS
ENGINE, ELECTRICAL, TRANSMISSION,
DRIVE AXLES & HYDRAULIC COMPONENTS

Boom Lift Point

For safer handling of suspended loads



Intuitive Operator Controls

Function boom and chassis sway controls with one arm



WE DON'T DO AVERAGE.

At Xtreme Manufacturing, we build the largest range of heavy duty and high capacity telehandlers in North America. And we build them to outlast and outperform anything else in the industry – period. In fact, we set the standard for safety, productivity and reliability. Plus, we back all of our telehandlers up with an unmatched **10 year - 5 year - 2 year warranty.**

Downtime is the enemy of any jobsite. So, we design our machines to be super heavy duty and very low maintenance, greatly reducing downtime and lowering total ownership costs across the life of the machine. But we're not just tough, we're smart, too. Xtreme telehandlers feature cabs with 360-degree operator visibility, and intuitive controls so operators can keep one hand on the steering wheel at all times. Because safety is as important to us as strength. It's not about meeting industry standards, it's about setting them. Because we don't do average. **And that's what makes us different.**

*Standard features may vary across individual models. Consult your sales representative for more details.

STANDARD FEATURES*

- Long life boom rollers
- 360° visibility
- Boom lift point
- Intuitive operator controls
- Standard auxiliary hydraulics
- Solid steel plate chassis
- Steel dash
- Ductile steel manifold
- Easy cab mounted grab handles
- Reliable tier 4 compliant engines
- Master disconnect switch
- Axle mounted outriggers
- Wider outrigger stance
- Large cross section boom
- Easy tie downs
- Heavy duty pre-cleaner
- Additional high pressure hydraulic filter
- Direct engine/transmission connection
- Display screen
- Suspension seat
- Easy service access
- Protected tilt & extend cylinders
- Steel hydraulic & fuel tanks
- Long life Lexan labels
- Heavy duty boom chains
- Suspended pedals
- Electrical ring terminals
- Large capacity fuel tanks
- Trunnion mounted sway cylinders
- Melonite pins
- Rear axle stabilization (RAS)
- Center mounted power train